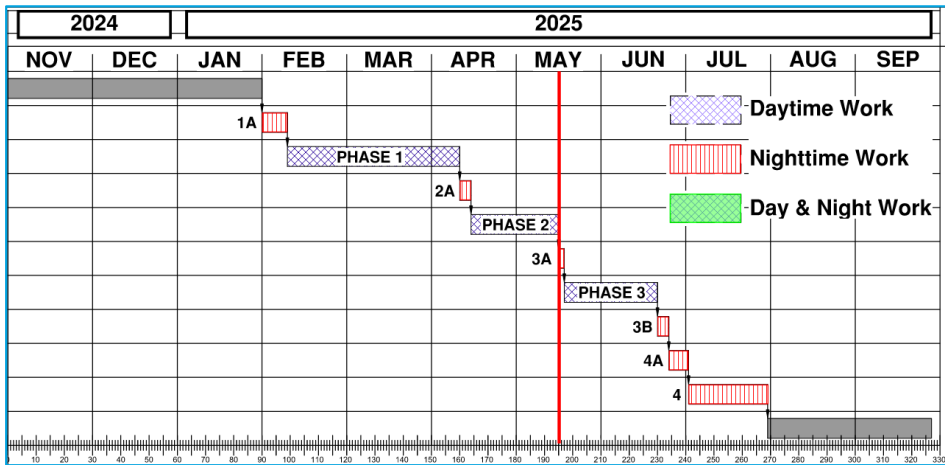
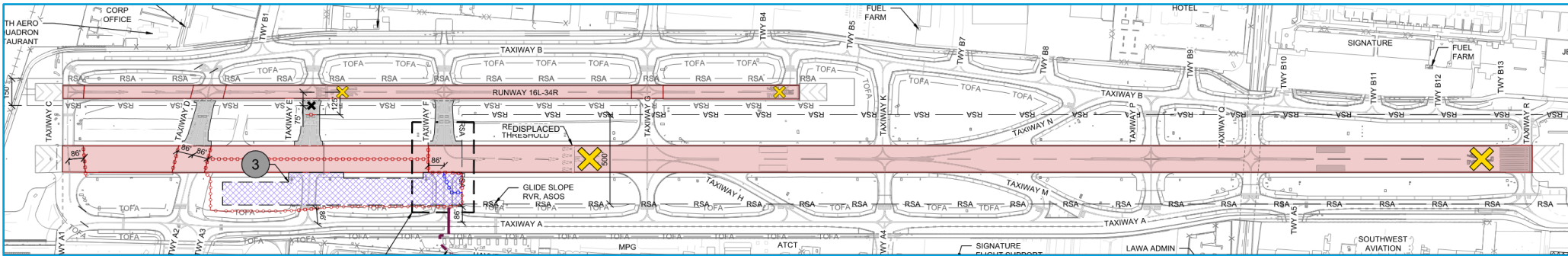


## 2 Calendar Nights, May 18 to May 20



## Construction Phase Notes

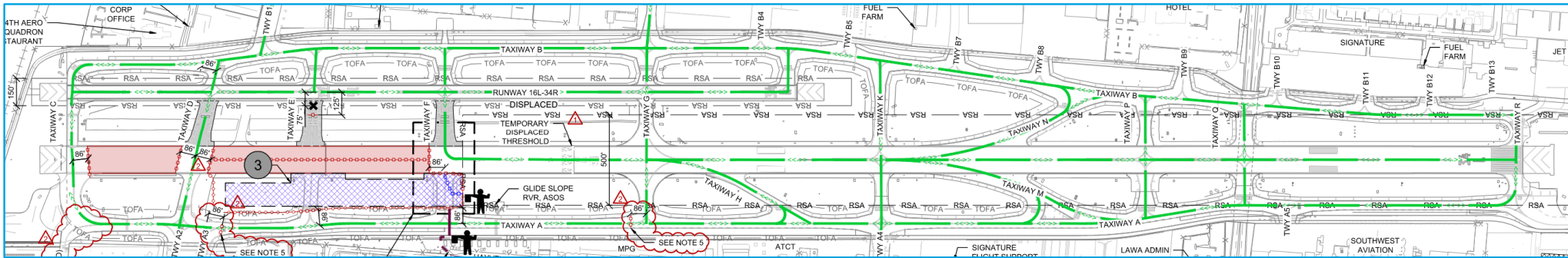
## Construction

1. Work Hours: Nighttime 2230 to 0600.
2. Work Days: Sunday to Tuesday.
3. Duration: 2 consecutive calendar nights.
4. Other Criteria:
  - a. Runway 16R-34L shall reopen by 0600 at the end of the first night.
  - b. Runway 16L-34R opening and taxiway closures / openings shall take effect over the final night of the phase.

## Airfield Operations

1. Runway 16L-34R and 16R-34L – Closed
2. Various Taxiways on north end – Closed

## Phase 3 – Taxiway E (west) and F (west) Reconstruction 33 Calendar Days, May 20 to June 21



**Runway 16R-34L Declared Distances**

	RWY 16R		RWY 34L	
	Existing	<b>Proposed</b>	Existing	<b>Proposed</b>
<b>TODA</b>	8,001'	<b>5,824'</b>	8,001'	<b>5,000'</b>
<b>TORA</b>				
<b>ASDA</b>	6,570'	<b>5,224'</b>	7,261'	<b>4,824'</b>
<b>LDA</b>				

### Construction Phase Notes

#### Construction

1. Work Hours: Daytime, Minimum 10-hr shifts.
2. Work Days: Monday thru Saturday.
3. Duration: 33 Calendar Days

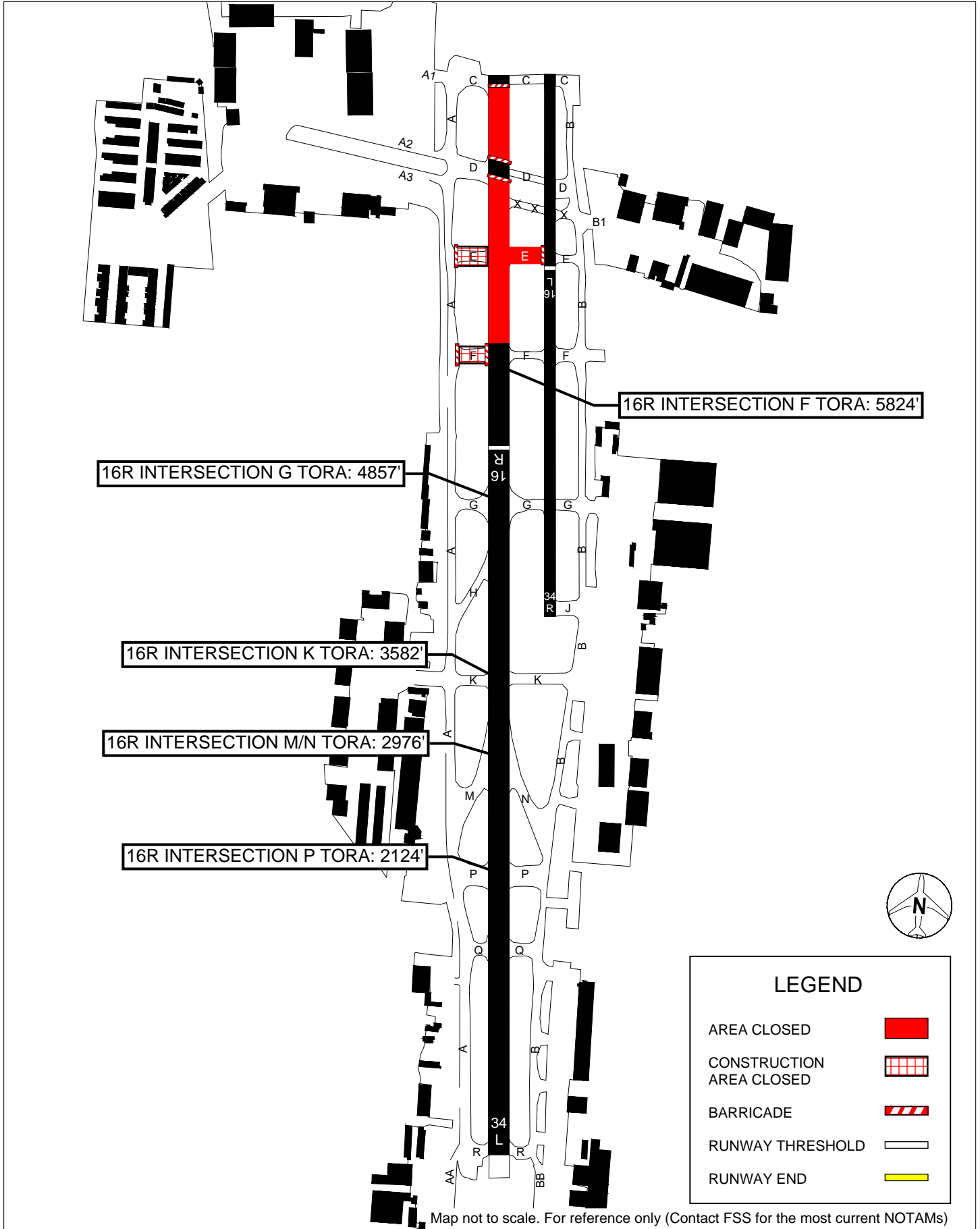
#### Airfield Operations

1. Runway 16R-34L – Threshold Displaced, Partially Closed
  - a. 16R ILS Not Available
  - b. 16R PAPI Not Available, Temporary PLASI Available

# VNY AIRPORT

RWY 16R Shortened Declared Distances  
Construction Phase 3 and 3B (Est. 5/20/25 to 6/26/25)

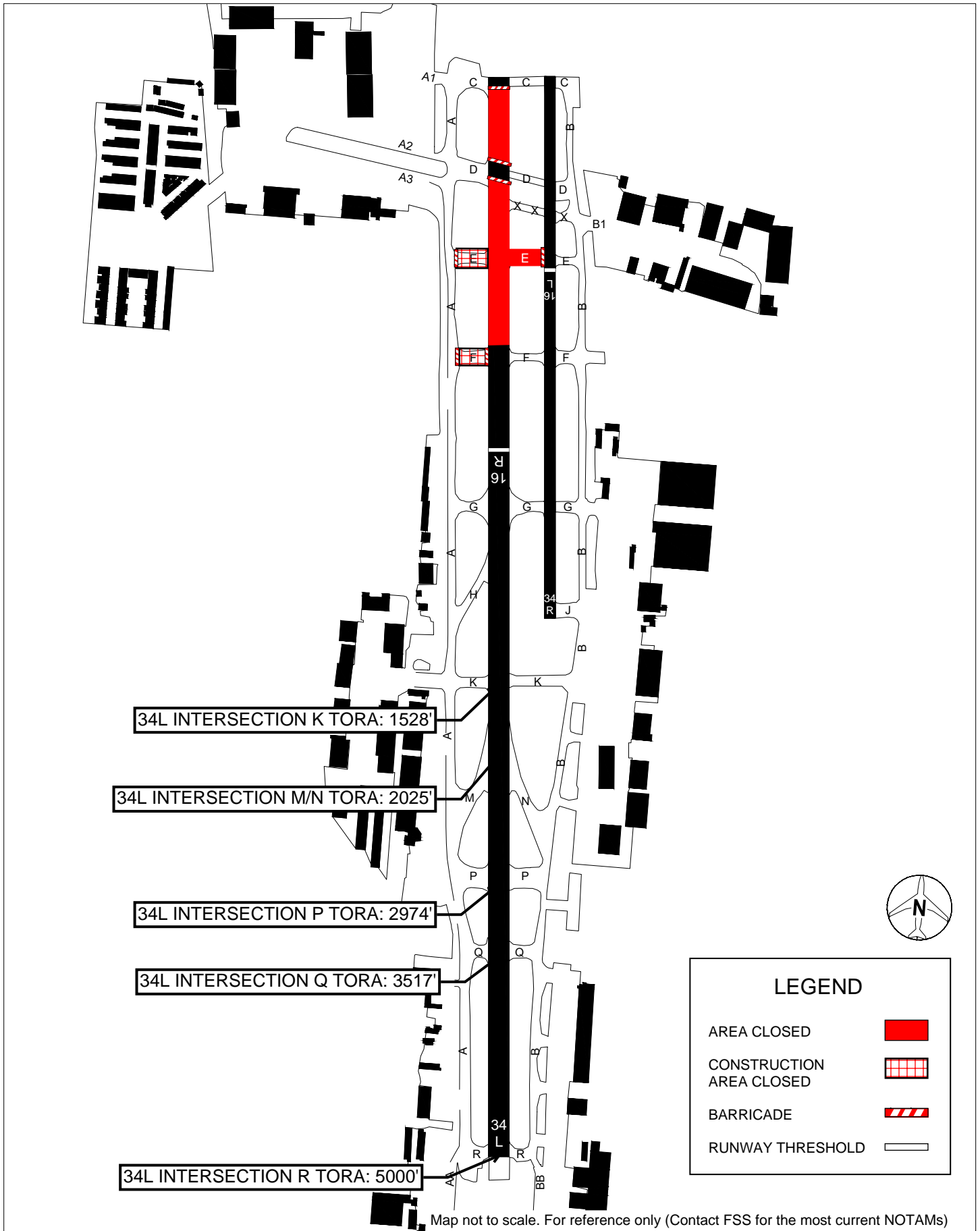
Current as of: 4/2/25



# VNY AIRPORT

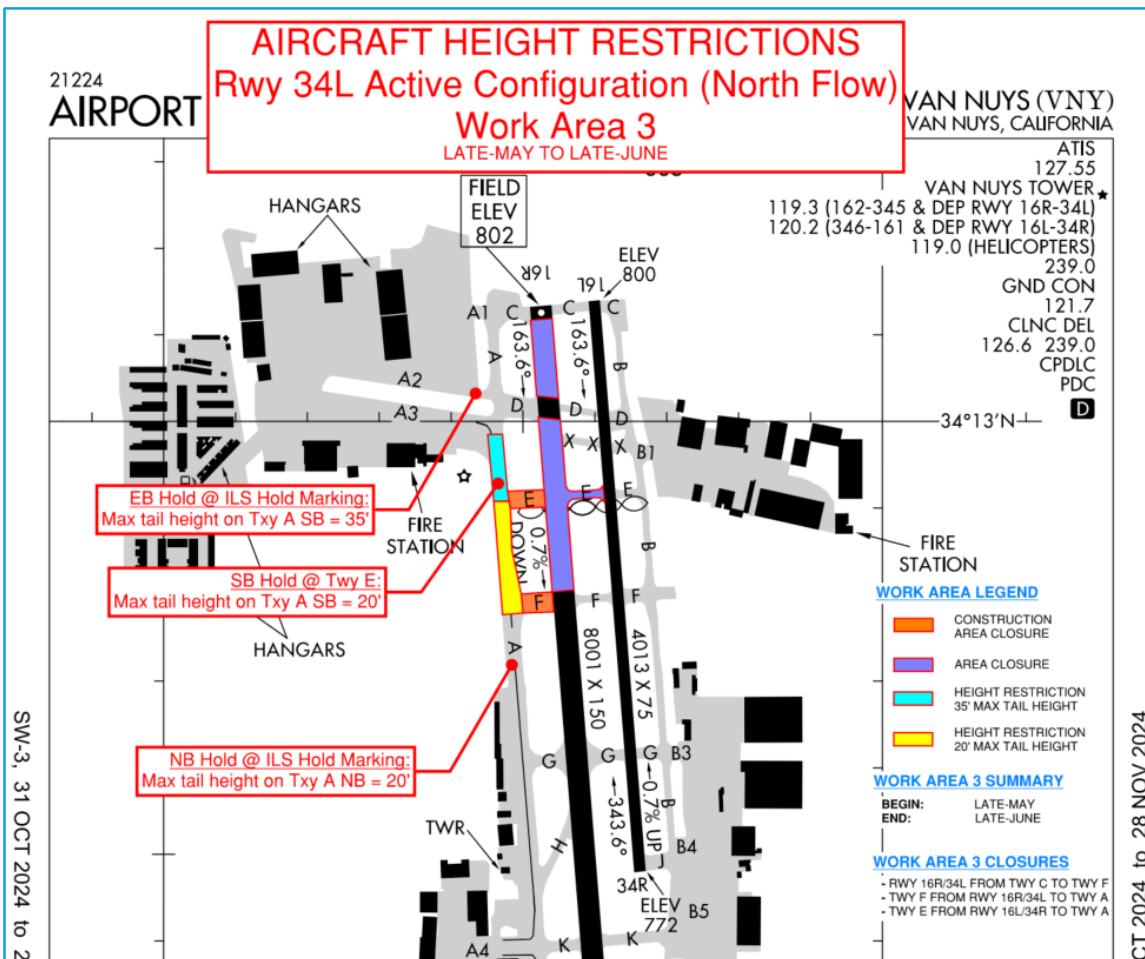
RWY 34L Shortened Declared Distances  
Construction Phase 3 and 3B (Est. 5/20/25 to 6/26/25)

Current as of: 4/2/25



## Phase 3 – Taxiway E (west) and F (west) Reconstruction

33 Calendar Days, May 20 to June 21



## North Flow, 34L Active Aircraft Height Restrictions

### Hold Positions for Aircraft Height Restrictions:

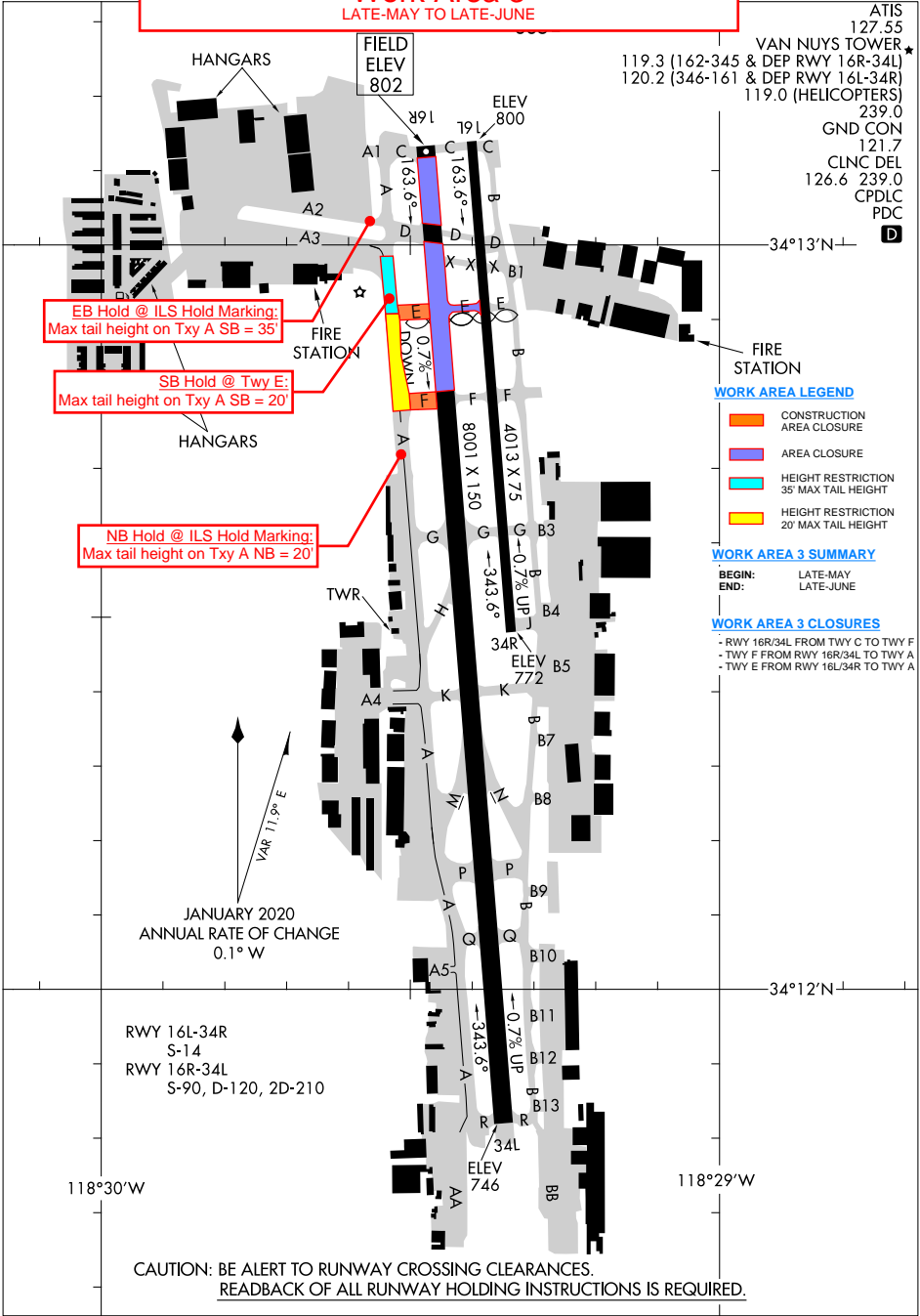
- 35' Max Tail Height:
  - ILS hold marking for SB aircraft on TWY A2 at TWY A
- 20' Maximum Tail Height:
  - TWY E intersection for SB aircraft on TWY A
  - ILS hold marking south of TWY F for NB aircraft on TWY A

**Height restricted areas are closed when ATCT is closed from 2245 to 0600**

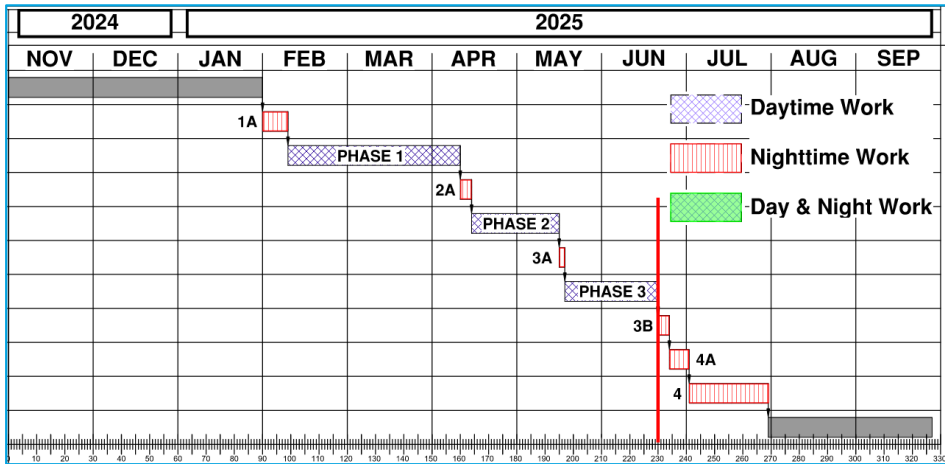
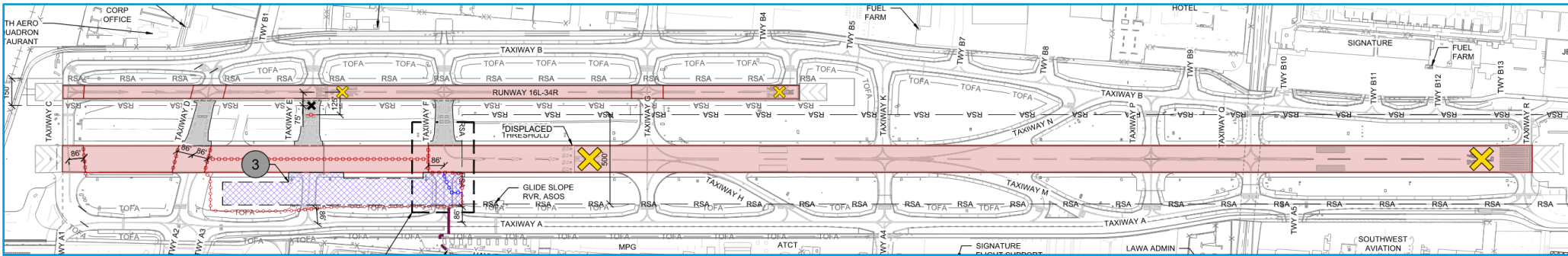
**AIRCRAFT HEIGHT RESTRICTIONS**  
**Rwy 34L Active Configuration (North Flow)**  
**Work Area 3**  
LATE-MAY TO LATE-JUNE

VAN NUYS (VNY)  
VAN NUYS, CALIFORNIA

ATIS 127.55  
VAN NUYS TOWER 119.3 (162-345 & DEP RWY 16R-34L)  
120.2 (346-161 & DEP RWY 16L-34R)  
119.0 (HELICOPTERS)  
239.0  
GND CON 121.7  
CLNC DEL 126.6 239.0  
CPDLC  
PDC



## Phase 3B – Runway 16R Threshold Restoration 4 Calendar Nights, June 22 to June 26



## Construction Phase Notes

## Construction

1. Work Hours: Nighttime 2230 to 0600
2. Work Days: Sunday to Thursday
3. Duration: 4 consecutive calendar nights
4. Other Criteria:
  - a. Runway 16R-34L shall reopen by 0600 at the end of each of the first three nights
  - b. Runway 16R threshold restoration shall take effect over the final night during the allocated duration

## Airfield Operations

1. Runway 16L-34R and 16R-34L – Closed
2. Various Taxiways on north end – Closed