



Van Nuys

Los Angeles World Airports

AIRPORT ADVISORY NOTICE

Notice #2019-016

Date: Saturday, April 06, 2019

Time: 06:00 AM

Subject: RWY 16R/34L SHORTENED IN SUPPORT OF TWY B REHABILITATION PROJECT

Runway 16R/34L will be shortened accommodate construction work at the south end of TWY B.

Please see the attached diagram for additional information.

For additional updates please see the VNY Construction Update Website at:

<https://www.iflyvny.com/en/construction-update>

NOTE:

For official NOTAM information, go to <https://pilotweb.nas.faa.gov/PilotWeb/> or contact a Flight Service Specialist at 1-800-WX-Brief (1-800-992-7433).

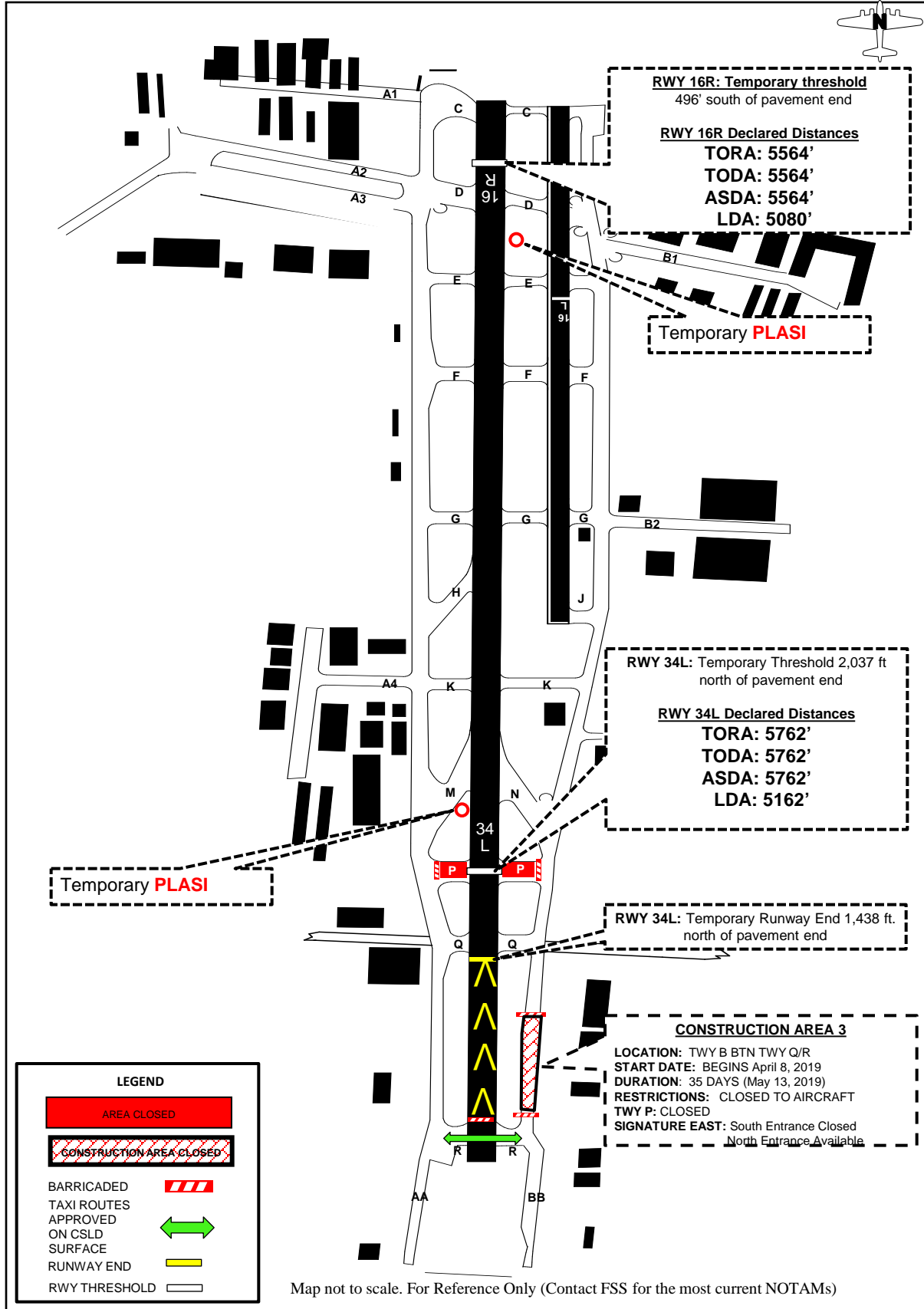
ADVISORY ISSUED BY	R. Nash
DATE ISSUED	3/20/2019
TIME ISSUED	11:00 AM

For additional information, contact the Van Nuys Airport at (818) 442-6506 or via facsimile at (818) 442-6751

VNY Airport

TWY B Work Area 3 Construction

TWY / RWY CLOSURE MAP



RWY 16R: Temporary threshold
 496' south of pavement end

RWY 16R Declared Distances
TORA: 5564'
TODA: 5564'
ASDA: 5564'
LDA: 5080'

Temporary **PLASI**

RWY 34L: Temporary Threshold 2,037 ft
 north of pavement end

RWY 34L Declared Distances
TORA: 5762'
TODA: 5762'
ASDA: 5762'
LDA: 5162'

Temporary **PLASI**

RWY 34L: Temporary Runway End 1,438 ft.
 north of pavement end

CONSTRUCTION AREA 3

LOCATION: TWY B BTN TWY Q/R
START DATE: BEGINS April 8, 2019
DURATION: 35 DAYS (May 13, 2019)
RESTRICTIONS: CLOSED TO AIRCRAFT
 TWY P: CLOSED
SIGNATURE EAST: South Entrance Closed
 North Entrance Available

LEGEND

AREA CLOSED

CONSTRUCTION AREA CLOSED

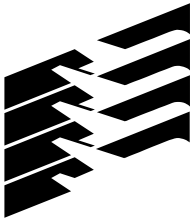
BARRICADED

TAXI ROUTES APPROVED ON CSLD SURFACE

RUNWAY END

RWY THRESHOLD

Map not to scale. For Reference Only (Contact FSS for the most current NOTAMS)



Van Nuys

Los Angeles World Airports

A Message from the VNY Chief of Operations

Re: Phase 2A – Taxiway B Rehabilitation Project

Dear VNY Aviation Stakeholder:

We are pleased to report that Phase 1 (north end construction) of the “Taxiway B Rehabilitation Project” will be completed on Saturday, March 30, 2019.

Phase 2A will begin on Monday, April 1, 2019 with preparatory work for displacing the runway thresholds on Runway 16R/34L. The following 16R/34L night closures (10 p.m. to 6 a.m.) are scheduled for:

Start date: Monday, April 1
End date: Saturday, April 6
Duration: Five consecutive night closures
Hours: 10 p.m. to 6 a.m.

Phase 3 and 4 (south end construction) will begin immediately following the opening of Runway 16R/34L at 6:00 a.m. At this time, aircraft will begin operating on a shortened runway configuration and a new relocated threshold.

As a reminder, Runway 16R/34L will be in its shortened configuration for approximately 73-days starting on April 6, 2019 at 06:00 a.m.

All pertinent project information is available online at <https://www.iflyvny.com/en/construction-update> . We also highly recommended that you and your flight crews check official NOTAM information at least two calendar days prior to any planned operation to confirm current NOTAM information. For official NOTAM information, go to <https://pilotweb.nas.faa.gov/PilotWeb/>, or contact a Flight Service Specialist at 1-800-WX-Brief (1-800-992-7433).

*Please note: During phases 2A, 3 and 4, **Runway 16L/34R** will be open full length for normal operations between the hours of 6:00 a.m. and 10:45 p.m. local.

If you have any questions or concerns, please contact me or one of the VNY Operations staff members at (818) 442-6506.

Work has been carefully phased to minimize operational impacts to our airport tenants and users, we appreciate your patience as we work to build a better VNY

Christian Moreno
Chief of Airport Operations

DATED: March 20, 2019