



Van Nuys

Los Angeles World Airports

AIRPORT ADVISORY NOTICE

Notice #2019-019

Date: Monday, April 08, 2019

Time: 06:00 AM

Subject: TAXIWAY B REHABILITATION - WORK AREA 3 AND WORK AREA 3A

The TWY B Rehab Project – Work Area 3 start date begins April 08, 2019 at 6:00am local time through May 13, 2019 at 3:00pm local time.

The following areas are affected:

- RWY 16R/34L SHORTENED and Taxiway P closed.
- Taxiway B closed between Taxiway R to 850ft north of Taxiway R.

The TWY B Rehab Project – Work Area 3A consists of **14 consecutive night closures** of the intersection of Taxiway B at Taxiway R from 9:00pm through 5:00am local time. This work will run concurrently with work area 3 and finish on May 13, 2019 at 5:00am local time

The following areas are affected:

- RWY 16R/34L SHORTENED and Taxiway P closed.
- Intersection of Taxiway B at Taxiway R closed nightly (open daily between 5:00am and 9:00pm).

Please see attached diagram.

NOTE:

For official NOTAM information, go to <https://pilotweb.nas.faa.gov/PilotWeb/> or contact a Flight Service Specialist at 1-800-WX-Brief (1-800-992-7433).

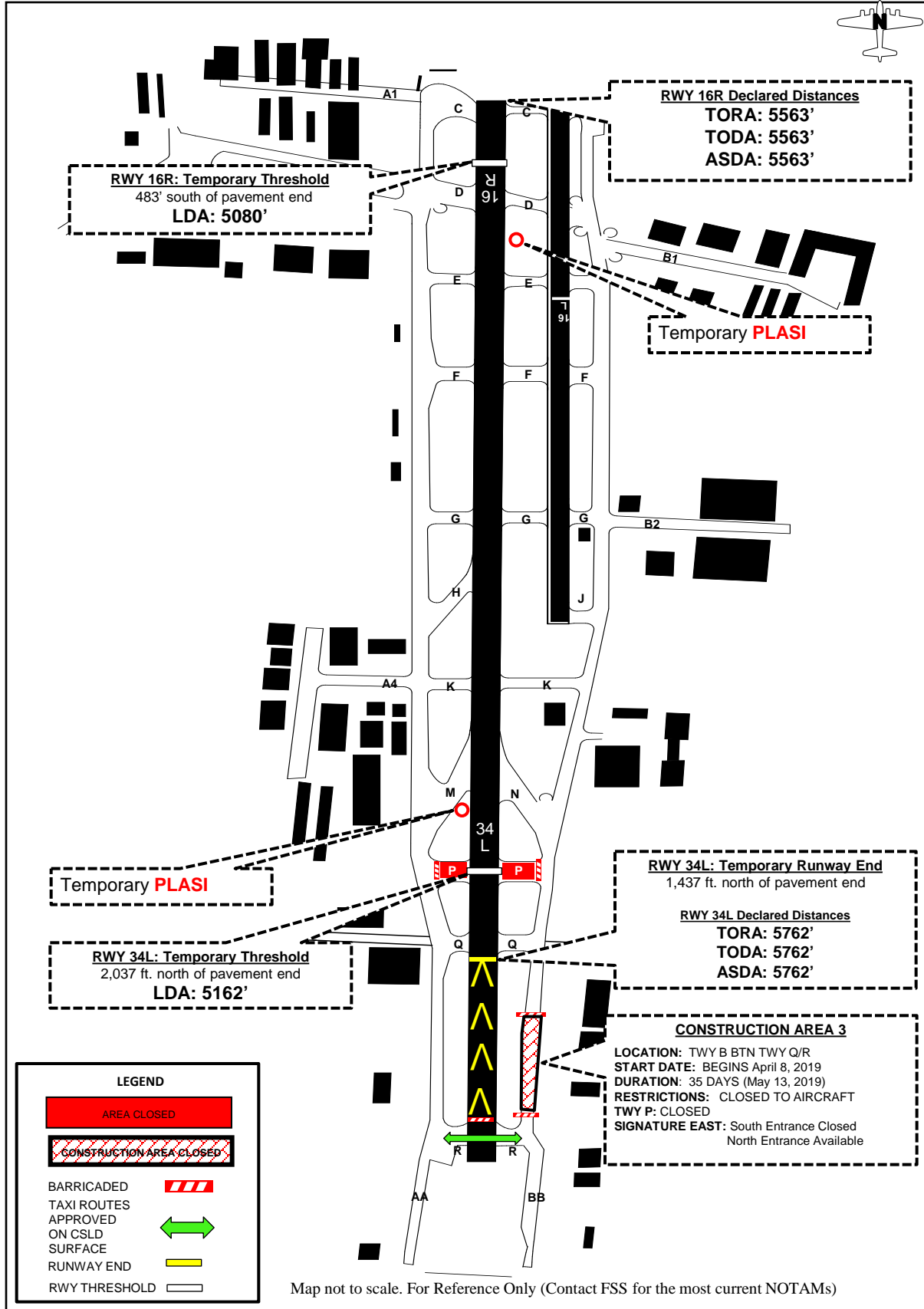
ADVISORY ISSUED BY	R. Nash
DATE ISSUED	3/30/2019
TIME ISSUED	08:00 AM

For additional information, contact the Van Nuys Airport at (818) 442-6506 or via facsimile at (818) 442-6751

VNY Airport

TWY B Work Area 3 Construction

TWY / RWY CLOSURE MAP



RWY 16R: Temporary Threshold
 483' south of pavement end
LDA: 5080'

RWY 16R Declared Distances
TORA: 5563'
TODA: 5563'
ASDA: 5563'

Temporary **PLASI**

Temporary **PLASI**

RWY 34L: Temporary Threshold
 2,037 ft. north of pavement end
LDA: 5162'

RWY 34L: Temporary Runway End
 1,437 ft. north of pavement end

RWY 34L Declared Distances
TORA: 5762'
TODA: 5762'
ASDA: 5762'

CONSTRUCTION AREA 3

LOCATION: TWY B BTN TWY Q/R
START DATE: BEGINS April 8, 2019
DURATION: 35 DAYS (May 13, 2019)
RESTRICTIONS: CLOSED TO AIRCRAFT
 TWY P: CLOSED
SIGNATURE EAST: South Entrance Closed
 North Entrance Available

LEGEND

AREA CLOSED

CONSTRUCTION AREA CLOSED

BARRICADED TAXI ROUTES

APPROVED ON CSLD SURFACE

RUNWAY END

RWY THRESHOLD

Map not to scale. For Reference Only (Contact FSS for the most current NOTAMS)